

2005 Award Winner

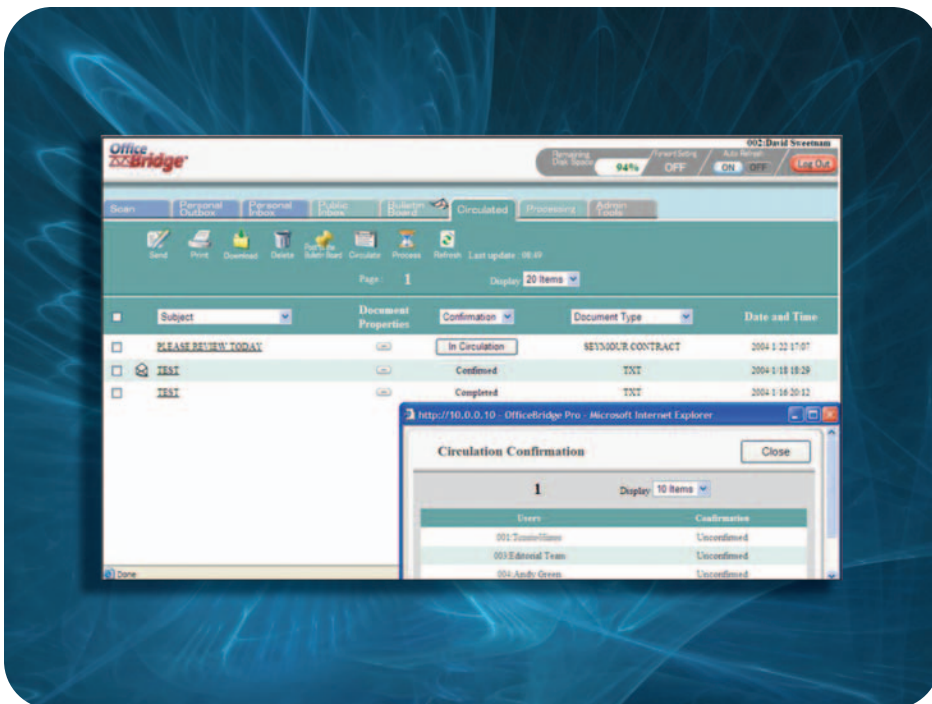


10th Annual Awards

Innovation Award

Muratec

OfficeBridge Pro



The BERTL's Best Award for "Innovation" is bestowed on a product which brings something truly unique to market. Innovation can take many forms, from using technology in a new and novel way, to creating something with the potential to change the way business might be done in the future.

BERTL has awarded the 2005 BERTL's Best Award for Innovation to Muratec for its OfficeBridge Pro.

OfficeBridge Pro describes a scan-to-X upgrade for Muratec's MFX series of copier MFP devices. However, just calling it a network scanning application doesn't do justice to this well thought out software. The real treasure

in OfficeBridge Pro can be found in its simple and elegant workflow solution. From either Web or console, non-technical users can initiate a point-to-point, multi-state document review process or post the document in a public area for collaborative review.

For smaller businesses, Muratec's OfficeBridge Pro is a credible alternative to more expensive document management systems. It offers those key workflow features that would most likely be used by firms taking a first step towards an e-document infrastructure.

Like other network scanning solutions, OfficeBridge Pro offers a mailbox metaphor for stored documents. Once documents are scanned to a user mailbox, users can print, email, fax, download to a PC, or copy the document to a destination mailbox via the OfficeBridge Pro Send function. Our analysts liked the ability of the Send function to simultaneously distribute the document to fax and email — a feature rarely found in competing vendors' networking software.

OfficeBridge Pro, though, improves on this idea by borrowing the concept of "document state" from more sophisticated document management systems. From either a console or from its easy-to-use Web interface, users initi-

2005 Award Winner



10th Annual Awards

The screenshot shows a Netscape browser window displaying the OfficeBridge Pro web interface. The browser's address bar shows "http://10.0.0.10/mainwork.htm". The interface includes a menu bar (File, Edit, View, Go, Bookmarks, Tools, Help), a toolbar with icons for Send, Print, Download, Delete, Post to the Bulletin Board, Circulate, Process, Re-assign, Complete Processing, and Refresh. A status bar at the top right shows "004:Andy Green", "Remaining Disk Space 99%", "Forward Setting OFF", "Auto Refresh ON OFF", and a "Log Out" button. Below the toolbar, there are tabs for "Scan", "Personal Outbox", "Personal Inbox", "Public Inbox", "Bulletin Board", "Circulated", "Processing", and "Admin Tools". A table displays document workflow information with columns for Subject, Document Properties, Status, Sender, Requested User, Document Type, and Required Time.

<input type="checkbox"/>	Subject	Document Properties	Status	Sender	Requested User	Document Type	Required Time
<input type="checkbox"/>	TEST		Alert	Andy Green	Editorial Team	TXT	2004 1/17 19:25
<input type="checkbox"/>	TEST		Alert	TamaraHines	Andy Green	TXT	2004 1/16 20:34
<input type="checkbox"/>	TEST		Completed	Andy Green	TamaraHines	TXT	2004 1/16 20:23

From the Web-based interface, users can view the state of a document workflow

ate a workflow by sending the document to another registered user's mailbox in an unprocessed state. Senders can also add a comment with instructions regarding, for example, the specific area of the document to review.

The Web interface becomes a kind of simple document management interface. A separate desktop utility called InfoMonitor displays a pop-up when a new document has arrived. Users then log in to the OfficeBridge Pro Web interface to review and process the new document. They can either mark the distributed document as completed or send it to another user's mailbox for further review. To protect against a document falling into limbo, OfficeBridge Pro allows initiating users to assign a dead-

line date and time. If the deadline has passed before the document is reviewed, the document is marked as overdue and the sender notified.

OfficeBridge Pro's circulation function supports a more collaborative process. Instead of sending a document to a single user, this function copies the document to a group of users. OfficeBridge Pro monitors whether users have viewed the document and sets the state to "confirmed" only when all receivers have had a chance to examine it. The less structured bulletin board function allows documents to be sent to all registered users, providing a simple broadcast mechanism for important news and announcements.

What makes OfficeBridge Pro even more flexible is that at any point in the workflow users are free to send the document to any network destination.

Besides these workflow and networking functions, OfficeBridge Pro includes a Document Download Manager that can periodically poll mailboxes and send documents to a file system (Windows, Netware, and others).

In summary, Muratec's OfficeBridge Pro provides sophisticated document management features and network scanning for the price other vendors charge for networking alone. Considering the functionality being offered and productivity potential, a smaller organization should find a quick pay-back for its OfficeBridge Pro investment.

2005 Award Winner



10th Annual Awards

Spotlight on Muratec

Muratec America, Inc. and Muratec U.K. Ltd are U.S./U.K.-based subsidiaries of Murata Machinery, Ltd. a privately held Japanese multinational corporation founded in 1935.

Operating throughout North and South America, Muratec America is a manufacturer of fax-based multifunction (MFP) office equipment as well as desktop and small workgroup copier-based MFPs.

Since its establishment in the U.K. in 1992, Muratec has rapidly expanded to establish its position as the fax specialists throughout the U.K. and

Europe. In the U.K., Muratec has established a strong position as one of the top plain paper fax suppliers and continues to be one of the leading brands within the U.S.

The company entered the U.S. market in 1982 as Murata Business Systems to sell fax machines through private-label agreements with multiple U.S. companies. In 1985, Murata began marketing its fax products under its own name from its corporate headquarters in Dallas, Texas.

The company changed its name in 1992 to Muratec and re-aligned its

business model away from retail to focus instead on sales and distribution through a national business-to-business dealer channel.

Muratec products are frequently recognized by independent industry analysts as being some of the best in the industry.

BERTL's Best

Recognizing the Best in Digital Imaging Technology and Innovation

For the 10th consecutive year, BERTL, Inc. presents BERTL's Best: the best devices and software in the digital imaging marketplace.

BERTL's Best award winners are selected after rigorous analysis of the hundreds of digital imaging devices, software, and management utilities in the world-wide marketplace.

BERTL's analysts review current product lines and new product introductions to identify the select group of devices and software that stand apart from the others.

BERTL's Best covers the entire digital imaging and document management arena:

- Executive Office MFPs
- General Office Monochrome MFPs
- Back Office Production Devices
- Wide Format Devices
- Digital Duplicators
- General Office Color MFPs
- Back Office Production Color Devices
- Document Scanners
- Software and Utilities

Plus, BERTL's Best recognizes products for cost-efficiency and innovation.

While print or copy speeds are important, it is the feature set, functionality, performance, and overall business process value that are the key considerations in judging which product is "BERTL's Best." The important question: "How well does this product work in a real-world business setting?"

BERTL combines its wide-ranging knowledge of the competitive landscape and contact with buyers about their product and supplier experiences to identify worthy products. BERTL analyzes network management utilities, concurrency and contention, print and copy productivity, image quality, return on investment, competitive advantage, accessibility, design and build quality, standard functions, modularity of design and upgrade path, installation, and more.

BERTL is 100 percent independent. It receives no funding from the industry and all product evaluations and reports are published at BERTL's own expense for its subscribers.

BERTL publishes the world's largest library of business competitive intelligence for the digital imaging market at www.BERTL.com